



National and regional prevention context

GoodLives GM - Greater Manchester

GM's approach to delivering community-led models of preventative Early Family Help has formed part of the GM-wide [GoodLives GM](#) initiative between Nov 2023-March 2025. GM's overarching vision is for a place where everyone can live a good life, by creating a culture of prevention and reducing structural inequalities.

This far-ranging work empowers, equips and connects the regions' leaders, practitioners and communities to work together in new ways and learn about what it takes to make good lives for all possible. This work includes the creation of optimum neighbourhood models, supported by the Mayor's [Live Well](#) ambitions to build sustainable, resilient communities with a flourishing VCFSE sector.

GoodLives GM's work in Early Family Help integrates learning within the wider GM system about the practice of shifting towards community-led models of support, as well as being informed by learning from Health, Mental Health and cross-sector leadership Action Learning sets, all working collectively towards this vision.

National policy direction

The Department for Education have recognised the value of collaboration across GM as a stronghold for future Family Help reforms, as outlined in the McAllister review.

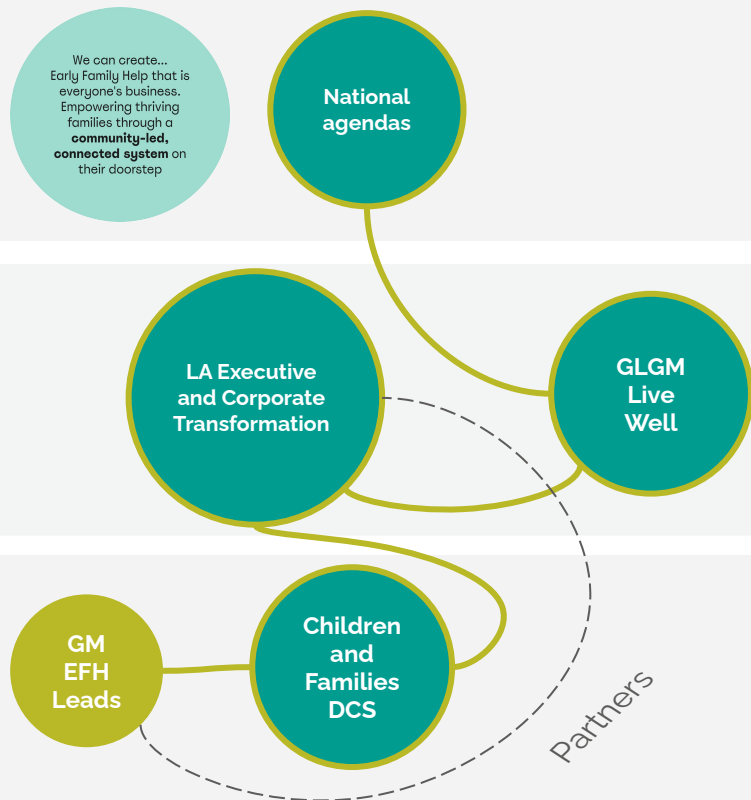
GM EFH teams have created strong foundations needed to deliver future intended Family Help models, having focussed on building strong community networks of support around families that can be built on to create a continuum of trusted family support.

This work exists within a nationwide policy-pivot towards upstream, preventative approaches, with funding aimed at building transformation across core social domains.

Integration with prevention transformation agendas



Work on developing the practice and culture seeded in EFH is supporting the delivery of local and national prevention agendas, ready to be embedded, scaled and integrated to all-age community-led prevention work.



How does this work integrate?

Preparing for Family Help FFCP reforms by creating a connected network of multidisciplinary community and statutory teams on families doorsteps. A focus on building relationships and sharing power with others to lead Family Help and create networks of trusted relationships and partnerships around families, which is crucial to deliver Family Help and wider CSC reforms. National policy focus on prevention and public sector transformation towards early intervention

How does this work integrate?

GM whole system shift towards a culture of prevention through Live Well. EFH work delivering local transformation and corporate agendas. Creating optimum Neighbourhood and Community preventive models of Public Service delivery and growing and connecting VCFSE leadership in CandF, ready to apply to all-age proactive prevention offers. Incl. learning from Family Hub network and Bridge development, creating MDT and community EFH collaboratives and co-leadership of Family Hubs with VCFSE organisations. .

How does this work integrate?

Creation of a strong EFH system of sustained Family Help networks and partnerships in communities, focus on building preventative factors that enable families to live well and thrive. Reducing costly interventions and assessments that flow around and repeat across the CSC system. Least intrusive practice ethos. When families hit a bump in the road there are existing networks and trusted relationships on their doorsteps to support them.



EFH Trailblazer: Seeding national FFCP transformation

Culture of prevention

Families First for Children pillars

Family Help

Community embedded
 Alternatively qualified leads
 FH MDT TAF incl. VCSE and Community and CIN
 Integrated Front Door
 Single assessment of need, drawing in new teams / people as needed

Family Networks

Building support networks with extended family and people around families as the first point of call
 FGDM/FGC
 Kinship Care

Safeguarding Partnerships

Infrastructure of partnerships

Child Protection

Lead Child Protection Practitioner
 MACPT - Police, Health, Education, LA
 Parental engagement
 Collaborative relationship with Family Help teams
 More focus on help than assessment

Refined roles for EFH teams to map family journey's and community assets, build networks and connect to help when needed

Family Voice led

Alternatives to services incl. Non Statutory EFH leads

Collective governance of EFH missions and strategies w. Statutory and VCFSE *inc. Family Hub delivery*

Collaboratives of EFH Statutory and Community MDTs in Neighbourhoods with a **shared culture**

Building **trusted family networks** from the '**doorstep out**' *incl. Family Hubs Networks/Bridges*

EFH Trailblazer work
 IU support Nov'23 - March '25

Creating established culture, practice and structures in EFH needed for ongoing continuum of support required for Family Help, Family Networks, Safeguarding Partnerships and CP reform



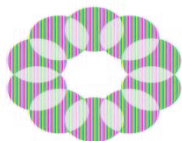
“The ten local authorities in Greater Manchester are **strongly encouraged to collaborate with each other and GMCA**, building on the strengths of the previous regional approach developed through the Supporting Families programme.

Specifically, the Department is interested in further collaboration by GM authorities with a focus on service transformation...”

- **Department for Education**



TY



LIVE
DOING THINGS D
GREATER MANCI

Live Well is GM's movement for community-led health and wellbeing, acting as the catalyst for delivering long held prevention and reform ambitions and accelerating community-led activity.

It will bring about a radical shift in how GM delivers public services and works alongside people and communities their neighbourhoods with a sharp focus on preventative support.

All Neighbourhoods across GM are aligning towards this vision, joining public services with vibrant VCFSE ecosystems to create a single culture of proactive prevention.

There are four key components of this work:

Optimum Neighbourhood Models

Multi-agency teams working on geographical footprints of 30-50k population with a person-centred focus.

Resilient VCFSE and Communities

Growing, supporting and connecting community assets

Live Well Centres, Spaces and Offers

Public Services and community support working together to provide a consistent everyday support offer.

Culture of prevention:

Workforce and organisational development geared towards proactivity



EFH Trailblazer: Seeding local Live Well transformation

Culture of prevention

Live Well ambitions

Optimum Neighbourhood Models
Working differently in communities and with organisations that support people

Resilient VCFSE and Communities
Growing, supporting and connecting community assets

Live Well Centres, Spaces and Offers
Investment in new centres and spaces, as well as building on the strengths and assets that exist in communities to support prevention

Redesigned roles of EFH teams to map family journeys, community assets, build networks and connect to help when needed

Family Voice led

Non statutory EFH leads

Community and VCFSE co-leadership of EFH missions and strategies incl Family Hub delivery

Collaboratives of EFH Statutory and Community MDTs in neighbourhoods with a shared culture

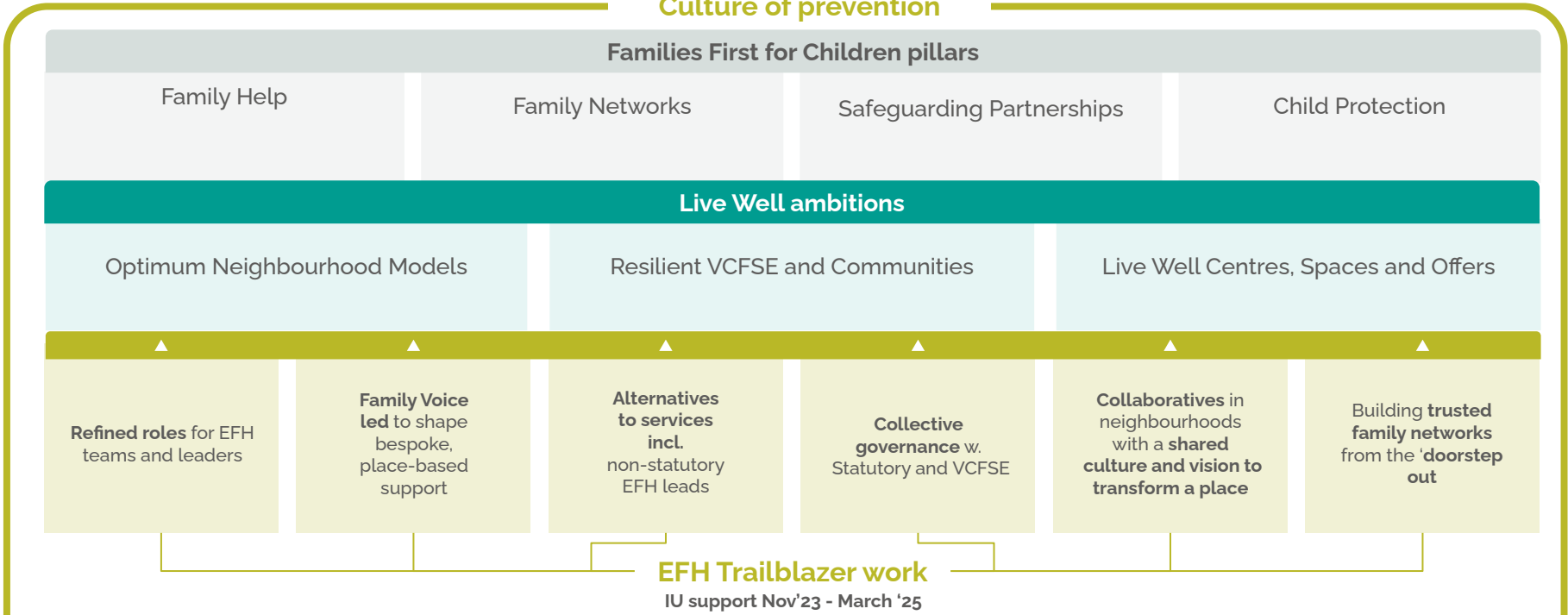
Building trusted relationships and networks from the 'doorstep out' incl. Family Hubs Networks and Bridges

EFH Trailblazer work

Established practice, culture and governance in Children and Families creates the optimum conditions required to expand to all age and whole-family prevention across the Live Well system



GM are pioneering transformation towards key prevention agendas



Creating established culture, practice and structures in EFH needed for ongoing continuum of preventative support (single-assessment, family focussed) required for Family Help, Family Networks, Safeguarding Partnerships and CP reform and Live Well ambitions