

An Early Family Help system for thriving families

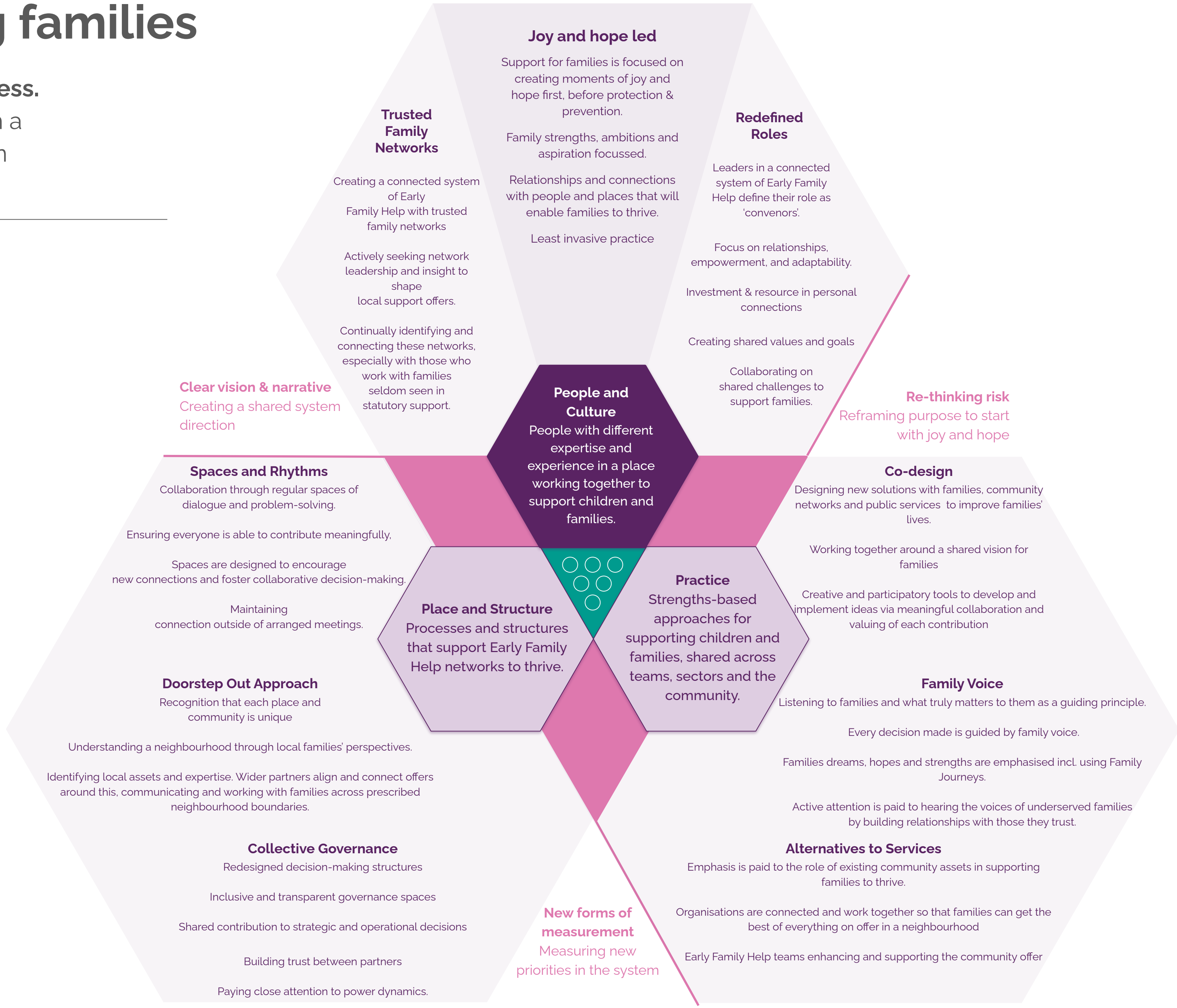
Early Family Help is everyone's business.
 We empower thriving families through a community-led, connected system, on their doorstep.

Connected systems

Children and families, local organisations, practitioners and leaders are connected in new ways to provide early family help support

Design principles

- Timely**
Right support, right place, right person, right time.
- Holistic**
The wider family context is understood and supported.
- Relational**
Establishing and maintaining a significant trusted relationship is prioritised.
- Asset-based**
Families' strengths are valued, reinforced and drawn upon.
- Empowering**
Families are empowered to build from their assets and to enact their own solutions.
- Local & sustained**
Everything builds from sustainable community support and relationships with peers.



Joy and hope led

Support for families is focused on creating moments of joy and hope first, before protection & prevention.
 Family strengths, ambitions and aspiration focussed.
 Relationships and connections with people and places that will enable families to thrive.
 Least invasive practice

Redefined Roles

Leaders in a connected system of Early Family Help define their role as 'convenors'.
 Focus on relationships, empowerment, and adaptability.
 Investment & resource in personal connections
 Creating shared values and goals
 Collaborating on shared challenges to support families.

People and Culture

People with different expertise and experience in a place working together to support children and families.

Re-thinking risk

Reframing purpose to start with joy and hope

Clear vision & narrative

Creating a shared system direction

Spaces and Rhythms

Collaboration through regular spaces of dialogue and problem-solving.
 Ensuring everyone is able to contribute meaningfully.
 Spaces are designed to encourage new connections and foster collaborative decision-making.
 Maintaining connection outside of arranged meetings.

Co-design

Designing new solutions with families, community networks and public services to improve families' lives.
 Working together around a shared vision for families
 Creative and participatory tools to develop and implement ideas via meaningful collaboration and valuing of each contribution

Place and Structure

Processes and structures that support Early Family Help networks to thrive.

Practice

Strengths-based approaches for supporting children and families, shared across teams, sectors and the community.

Family Voice

Listening to families and what truly matters to them as a guiding principle.
 Every decision made is guided by family voice.
 Families dreams, hopes and strengths are emphasised incl. using Family Journeys.
 Active attention is paid to hearing the voices of underserved families by building relationships with those they trust.

Doorstep Out Approach

Recognition that each place and community is unique
 Understanding a neighbourhood through local families' perspectives.
 Identifying local assets and expertise. Wider partners align and connect offers around this, communicating and working with families across prescribed neighbourhood boundaries.

New forms of measurement

Measuring new priorities in the system

Collective Governance

Redesigned decision-making structures
 Inclusive and transparent governance spaces
 Shared contribution to strategic and operational decisions
 Building trust between partners
 Paying close attention to power dynamics.

Alternatives to Services

Emphasis is paid to the role of existing community assets in supporting families to thrive.
 Organisations are connected and work together so that families can get the best of everything on offer in a neighbourhood
 Early Family Help teams enhancing and supporting the community offer